



3deluxe

PROFESSIONAL

CATALOGUE

PROFESSIONAL HAIR COSMETIC PRODUCTS.
Italian passion and experience.

MADE IN ITALY



3deluxe PROFESSIONAL

La collezione **3deluxe** è progettata, formulata e prodotta in Italia. Combiniamo i migliori ingredienti con tecnologie all'avanguardia e formule ad alte prestazioni, per ottenere prodotti di qualità eccezionale.

Il nostro obiettivo è offrire un'esperienza di bellezza superiore offrendo prodotti ispirati alla natura, con texture sensoriali e profumazione uniche.

3deluxe. Passione ed esperienza Italiana.

3deluxe's range of products for hair are designed, formulated and manufactured in Italy.

Combining the finest ingredients with cutting-edge technology and high performance formula, our final product is one of exceptional quality.

Our goal is to offer a premium beauty experience offering products inspired by nature with sensorial textures and unique fragrances.

3deluxe. Italian passion and experience.

La gama de productos para el cabello **3deluxe**, está diseñada, formulada y fabricada en Italia.

Combinando los mas finos ingredientes con tecnología de vanguardia y fórmula de alta performance, nuestro producto final es de calidad excepcional.

Nuestro objetivo es ofrecer una experiencia de belleza superior que ofrezca productos inspirados en la naturaleza con texturas sensoriales y fragancias únicas.

3deluxe. Pasión y experiencia Italiana.



3deluxe
PROFESSIONAL

PROFESSIONAL
COLOR

PERMANENT
HAIR COLOURING
CREAM

More than
a color...
a new light.

in-salon professional

3d lux Tech
Rich/Luminous/Multi-faceted Colour

ALTA QUALITÀ. I micropigmenti penetrano in profondità nella fibra capillare, garantendo un'ottima copertura e una maggiore durata del colore.

PROTEZIONE. Oligopeptidi di ridottissime dimensioni molecolari penetrano in profondità nella fibra capillare, apportando notevoli benefici in termini di vitalità e forza. Inoltre, il Decil Oleate, uno speciale emoliente anti-irritazione, crea un film protettivo.

IDRATAZIONE. Crema morbida, facile da applicare, ricca di agenti condizionanti e lenitivi (*olio di Argan e della Calendula*).

HIGH QUALITY. High quality micropigments penetrate deeply into the hair fiber, ensuring an excellent grey coverage and long lasting brilliant colour.

LUMINOUS. Low molecular weight peptides penetrate deeply into the hair fiber improving strength and vitality, while a special anti-irritation molecule, Decil Oleate, creates a protective film.

MOISTURE. Soft cream, easy to apply, rich in moisturizing and soothing agents (*Argan Oil and Marigold*).

ALTA CALIDAD. Los micropigmentos penetran profundamente en la fibra capilar, esto garantiza una excelente cobertura y una mayor duración del color.

PROTECCIÓN. Los oligopéptidos de dimensiones molecular muy pequeñas penetran profundamente en la fibra capilar, aportando beneficios significativos en términos de vitalidad y fuerza. Además el Decil Oleate, un emoliente antiirritante especial, crea una película protectora.

HIDRATACIÓN. Crema suave, fácil de aplicar, rica en agentes acondicionadores y Calmantes (*Aceite de Argán y Caléndula*).

COLOR CHART_118 NUANCES

	NATURALS	INTENSE NATURALS	MATT COLD NATURALS	ASH	INTENSE ASH	GOLDENS	BROWNS-BEIGES										COPPERS			
	.0	.00	.07	.1	.11	.3	.34	.31	.32	.35	.52	.8	.88	.81	.12	.13	.4	.43	.44	
10	10.0			10.1		10.34														
9	9.0	9.00	9.07	9.1	9.11	9.3									9.12	9.13				
8	8.0	8.00	8.07	8.1	8.11	8.3	8.34					8.8					8.4			
7	7.0	7.00	7.07	7.1	7.11	7.3		7.31	7.32			7.8		7.81			7.13	7.4	7.43	7.44
6	6.0	6.00	6.07	6.1	6.11	6.3		6.31	6.32	6.35	6.52	6.8	6.88	6.81			6.13	6.4		
5	5.0	5.00	5.07	5.1		5.3		5.31		5.35	5.52	5.8	5.88		5.12		5.4			
4	4.0	4.00		4.1		4.3				4.35	4.52		4.88		4.12					
3	3.0																			
1	1.0			1.10																

REDS			MAHOGANY	VIOLETS-IRISEE					
.62	.64	.66	.5	.02	.021	.21	.22	.26	.221
			10.5	10.02	10.021			10.26	
			9.5	9.02		9.21	9.22	9.26	
									8.221
7.62	7.64	7.66							
6.62		6.66							6.221
5.62	5.64		5.5						
			4.5						

3deluxe PROFESSIONAL

STANDARD mixing ratio

1:1,5

EX.: 50 ml 3deluxe Color + 75 ml 3deluxe Cream Developer



SPECIAL BLONDE mixing ratio

1:2

EX.: 50 ml 3deluxe Color + 100 ml 3deluxe Cream Developer



METALS	10.21	PINK	7.82	9.82	10.82	10.102	10.11	6.12	8.12	10.12
SPECIAL BLONDE	12.0	12.08/12.07	12.1	12.11	12.12/12.16	12.21	12.021/12.81	12.022/12.89	12.122/12.96	
SPECIAL MIX	10.00	BLUE	YELLOW	GREEN	RED	VIOLET				



Color

professional permanent hair colouring cream

3d lux Tech

IT. Crema colorante permanente per capelli. Miscelazione: versare 50 ml di 3deluxe in un contenitore di plastica e miscelare con 75 ml di Cream Developer a 20-30-40 volumi o con 100 ml a 40 volumi nel caso dei superschiarenti. Per ottenere una colorazione più intensa, miscelare 3deluxe 1:1 con Cream Developer a 20-30-40 volumi.

EN. Professional permanent hair colouring cream. Mixture: pour 50 ml of 3deluxe into a plastic container and mix with 75 ml of Cream Developer at 20-30-40 volumes or with 100 ml at 40 volumes in case of super-bleaching products. Mix 3deluxe 1:1 with Cream Developer at 20-30-40 volumes to obtain a stronger colour.

ES. Champú delicado uso frecuente. Mezclado: echar 50 ml de 3deluxe en un recipiente de plástico y mezclar con 75 ml de Cream Developer a 20-30-40 volúmenes o con 100 ml a 40 volúmenes, en caso de súper-decolorantes. Para obtener un color más intenso, mezclar 3deluxe 1:1 con Cream Developer a 20-30-40 volúmenes.

100 ml_3.38 fl. oz.



Cream Developer

stabilised oxidizing emulsion

IT. Cream developer è una emulsione cremosa ossigenata stabilizzata.

EN. Cream developer is a stabilised oxidizing emulsion.

ES. Cream developer es una emulsión oxidante en crema.

Tone on Tone Activator 1.5% (5V.) 1000 ml_33.8 fl. oz.
100 ml_3.38 fl. oz.

Cream Developer 3% (10V.) 1000 ml_33.8 fl. oz.

Cream Developer 6% (20V.) 1000 ml_33.8 fl. oz. / 100 ml_3.38 fl. oz.

Cream Developer 9% (30V.) 1000 ml_33.8 fl. oz. / 100 ml_3.38 fl. oz.

Cream Developer 12% (40V.) 1000 ml_33.8 fl. oz. / 100 ml_3.38 fl. oz.

1.5% **3%** **6%** **9%** **12%**
5 vol. **10 vol.** **20 vol.** **30 vol.** **40 vol.**



Bleaching powder

fast lightening action/low ammonia/microgranular dust free

with Marula Oil, Coconut Oil and Malic Acid
Rose Fragrance

IT. Polvere Decolorante. Massimo potere schiarente, azione rapida, condizionante. Schiarisce fino ad 9 toni rispettando il capello grazie all'amido di riso.

EN. Bleaching Powder. Powerful, fast acting, conditioning. Provides up to 9 levels of lift while conditioning the hair fiber thanks to the presence of rice starch.

ES. Polvo Decolorante. Máximo poder aclarante, de acción rápida, acondicionador. Aclara hasta 9 tonos respetando el cabello gracias al almidón de arroz.

30 g_Net Wt. 1 oz. / 500 ml_Net Wt. 17.64 oz.



Bleaching powder

over to 7 levels of lift
microgranular dust free

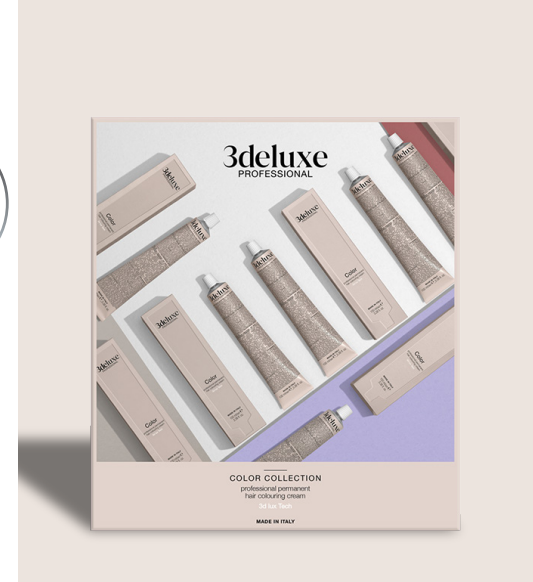
Fragrance Free

IT. Polvere Decolorante Bianca. Oltre 7 livelli di schiaritura - non volatile, microgranulare. Adatto a qualsiasi tecnica di schiaritura. Senza profumo.

EN. White Bleaching Powder. Over 7 levels of lift - microgranular dust free. Suitable for any type of lightening technique. Fragrance free.

ES. Polvo Decolorante Blanco. Más de 7 niveles de aclaración - Microgranular no volátil. Apto para cualquier tipo de técnica de aclarado. Sin perfume.

500 ml_Net Wt. 17.64 oz.



Color chart

118 NUANCES

IT. Disponibile in formato 32 x 36 cm.

EN. Available in 32 x 36 cm size.

ES. Disponible en formato 32 x 36 cm.



MIXING COLOR BOWL & COLOR BRUSH

BLEACHING POWDER'S SPOON

DISPOSABLE COLOR CAPES
(1x26 application color capes)





3deluxe
PROFESSIONAL

PROFESSIONAL CARE

The beauty and well-being of your hair...

in-salon professional & home care

THE COMPLETE HAIRCARE COLLECTION

Color

for colored hair



Color Shampoo

Nutritive

for dry/dull hair



Nutritive Shampoo

Filler

for dry/damaged hair



Filler Shampoo

No.Yellow

for blonde/bleached/gray hair



No.Yellow Shampoo

Blonde

for blonde/bleached/highlighted/gray hair



Blonde Shampoo

Detox

for all hair types



Detox Shampoo

Energizing

for fragile hair at risk of falling out



Energizing Shampoo



Color Mask



Nutritive Conditioner



Filler Conditioner



Blonde Mask



Energizing Lotion



Instant Filler Glow Water



Instant Cool Blonde Fluid



Color

for colored hair
per capelli colorati
para cabello teñido

... revive
the color



Color Shampoo
for colored hair
with Fig Extract and Almond Milk
Orange and Ginger Fragrance

IT. Shampoo protezione colore e luminosità per capelli colorati, con latte di mandorla dolce e fico. **Modo d'uso:** applicare sui capelli umidi, emulsionare e risciacquare.

EN. Color protection shampoo for colored hair, with sweet almond milk and fig. **Directions:** apply to wet hair, massage gently and rinse.

ES. Champú protector del color y brillo para cabello teñido, con leche de almendras dulces e higo. **Instrucciones:** aplique sobre el cabello mojado, masajee suavemente y enjuague.

250 ml_8.45 fl. oz. / 1000 ml_33.8 fl. oz.



shine



ACIDIC pH



color protection



Color Mask
for colored hair
with Sunflower Seed Extract
Blackcurrant and Peach Fragrance

IT. Maschera protezione colore per capelli colorati, con estratto di semi di girasole. **Modo d'uso:** applicare dopo lo shampoo sui capelli umidi e pettinare. Lasciare agire 2-3 minuti. Risciacquare.

EN. Color protection mask for colored hair, with sunflower seed extract. **Directions:** after shampooing, apply to wet hair and comb through. Leave on 2-3 minutes. Rinse.

ES. Máscara protectora del color para cabello teñido, con extracto de semillas de girasol. **Instrucciones:** aluego de lavar con el champú, aplique sobre el cabello mojado y pénelo. Déjelo actuar durante 2 o 3 minutos. Enjuague.

250 ml_8.45 fl. oz. / 1000 ml_33.8 fl. oz.



shine



ACIDIC pH



color protection





Nutritive

for dry and dull hair
 per capelli secchi e spenti
 para cabello seco y sin brillo

nourish
 your hair...



Nutritive Shampoo
 for dry and dull hair
 with Argan Oil and Honey
 Vanilla and Magnolia Fragrance

IT. Shampoo nutriente per capelli secchi, con olio d'argan e miele. **Modo d'uso:** applicare sui capelli bagnati, emulsionare e risciacquare.

EN. Nourishing shampoo for dry hair, with argan oil and honey. **Directions:** apply to wet hair, massage gently and rinse.

ES. Champú nutritivo para cabello seco, con aceite de argán y miel. **Instrucciones:** aplique sobre el cabello mojado, masajee suavemente y enjuague.

250 ml_8.45 fl. oz. / 1000 ml_33.8 fl. oz.



Nutritive Conditioner
 for dry and dull hair
 with Avocado Oil and Wheat Protein
 Coconut and Sandal Fragrance

IT. Balsamo nutriente intenso per capelli secchi, con olio di avocado e proteine del grano. **Modo d'uso:** applicare dopo lo shampoo sui capelli umidi e pettinare. Lasciare agire 2-3 minuti. Risciacquare.

EN. Extreme conditioner for dry hair, with avocado oil and wheat protein. **Directions:** after shampooing, apply to wet hair and comb through. Leave on 2-3 minutes. Rinse.

ES. Acondicionador extra nutriente para cabello seco, con aceite de aguacate y proteína de trigo. **Instrucciones:** luego de lavar con el champú, aplique sobre el cabello mojado y péinelo. Déjelo actuar durante 2 o 3 minutos. Enjuague.

250 ml_8.45 fl. oz. / 1000 ml_33.8 fl. oz.





Filler

for dry and damaged hair
 per capelli secchi e danneggiati
 para cabello seco y dañado

smooth
 your hair...



Filler Shampoo
 for dry and damaged hair
 with Vegetal Keratin and Hyaluronic Acid
 Apricot and Prunella Fragrance

IT. Shampoo rimpolpante e illuminante. Formula a pH acido. Deterge delicatamente e aiuta a rivitalizzare e rafforzare la fibra capillare, controllando l'effetto crespo. **Modo d'uso:** applicare sui capelli bagnati, emulsionare e risciacquare.

EN. Plumping and illuminating shampoo. Acid pH formula. It gently cleanses and helps to revitalize and strengthen the fiber structure for frizz-free hair. **Directions:** apply to wet hair, massage gently and rinse.

ES. Champú rellenador, alisador y reestructurante. Formula de pH ácido. Limpia delicadamente revitalizando y fortaleciendo la fibra capilar, controlando el efecto de frizz. **Instrucciones:** aplique sobre el cabello mojado, masajee suavemente y enjuague.

250 ml_8.45 fl. oz. / 1000 ml_33.8 fl. oz.

Sodium Chloride FREE	SIS/SLES FREE	strength	shine	frizz control



Filler Conditioner
 for dry and damaged hair
 with Vegetal Keratin and Hyaluronic Acid
 Apricot and Prunella Fragrance

IT. Balsamo rimpolpante e illuminante. Nutre intensamente i capelli rivitalizzando e rafforzando la fibra capillare, controllando l'effetto crespo. **Modo d'uso:** applicare sui capelli tamponati. Lasciare in posa 10 minuti, quindi risciacquare bene.

EN. Plumping and illuminating conditioner. It intensely nourishes the hair by revitalizing and strengthening the fiber structure, for frizz-free hair. **Directions:** apply to towel-dried hair. Leave on for 10 minutes, then rinse well.

ES. Bálsamo rellenador y reconstituyente. Nutre intensamente los cabellos revitalizando y fortaleciendo la fibra capilar, controlando el efecto frizz. **Instrucciones:** aplicar después del champú, secar los cabellos con una toalla y peinar. Dejar actuar 10 minutos. Enjuagar.

250 ml_8.45 fl. oz. / 1000 ml_33.8 fl. oz.

strength	shine	frizz control



Instant Filler Glow Water
 for dry and damaged hair
 with Vegetal Keratin and Hyaluronic Acid
 Apricot and Prunella Fragrance

IT. Dona in pochi secondi una chioma fluida, super lucente e straordinariamente leggera. **Modo d'uso:** applicare sui capelli umidi, massaggiare, quindi risciacquare.

EN. In a few seconds hair is fluid, super shiny and extremely lightweight. **Directions:** apply to towel-dried hair, massage, then rinse.

ES. Brinda en pocos segundos un cabello fluido, super brillante y sorprendentemente ligero. **Instrucciones:** aplicar en cabello húmedo, masajear y enjuagar.

250 ml_8.45 fl. oz.

strength	shine	frizz control

Blonde & No.Yellow

for blonde, bleached, highlighted or grey hair
per capelli biondi, decolorati, con mèches o grigi
para cabello rubio, decolorado con mechas o gris

wow effect...



Blonde Shampoo

for blonde, bleached, highlighted or grey hair with Lavender Flower and Oats Extract

Lavender and Iris Aroma

IT. Shampoo delicato uso frequente, pH 5.5 per tutti i tipi di capello con avena e lavanda. **Modo d'uso:** applicare sui capelli umidi, emulsionare e risciacquare.

EN. Daily use gentle shampoo, pH 5.5 for all hair types, with oats and lavender. **Directions:** apply to wet hair, massage gently and rinse.

ES. Champú delicado uso frecuente, pH 5.5 para todo tipo de cabello, con avena y lavanda. **Instrucciones:** aplique sobre el cabello mojado, masajee suavemente y enjuague.

250 ml_8.45 fl. oz. / 1000 ml_33.8 fl. oz.



Blonde Mask

for blonde, bleached, highlighted or grey hair with Vegetal Keratin and Macadamia Oil

Kumquat and Neroli Aroma

IT. Ideale per capelli biondi, decolorati, con mèches o grigi. Nutre, dona morbidezza, lucentezza e un aspetto sano ai capelli. **Modo d'uso:** applicare dopo lo shampoo, tamponare i capelli e pettinare. Lasciare agire 10 minuti. Risciacquare.

EN. Ideal for blonde, bleached, highlighted or grey hair. It nourished and gives smoothness and shine for healthy-looking hair. **Directions:** after shampooing, apply to towel-dried hair and comb through. Leave on 10 minutes, then rinse.

ES. Ideal para todo tipo de cabello, especialmente cabello teñido y dañado. Nutre, da suavidad, brillo y un aspecto saludable al cabello. **Instrucciones:** aplicar después del champú sobre el cabello seco con toalla y peinar. Dejar actuar durante 10 minutos. Enjuagar.

250 ml_8.45 fl. oz. / 1000 ml_33.8 fl. oz.



No.Yellow Shampoo

for blonde, bleached or grey hair with Violet Pigments

Tuberose and Patchouli Aroma

IT. No.Yellow shampoo. **Deterge delicatamente e aiuta a neutralizzare le tonalità giallastre.** Ideale per capelli biondi, decolorati, con mèches o grigi. **Modo d'uso:** applicare sui capelli umidi, emulsionare e risciacquare.

EN. No.Yellow shampoo. **Gently cleanses and helps neutralize yellow undertones.** Ideal for blonde, bleached, highlighted or grey hair. **Directions:** apply to wet hair, massage gently and rinse.

ES. Champú No.Yellow. **Limpia suavemente y ayuda a neutralizar los tonos amarillos.** Ideal para cabello rubio, decolorado, con mechas o canoso. **Instrucciones:** aplique sobre el cabello mojado, masajee suavemente y enjuague.

250 ml_8.45 fl. oz. / 1000 ml_33.8 fl. oz.





Instant Cool Blonde Fluid

cool blonde effect...



IT. Cool blonde in soli 10 secondi

L'innovativa **BASE HYDROGEL**, permette al pigmento viola di entrare direttamente a contatto col capello senza dover attraversare la fase oleosa (grassa) caratteristica delle emulsioni. Pertanto agisce più in fretta e più efficacemente.

VISIBILE ANCHE SU CAPELLI CON BASE 8, 9 E 10. La formula contiene delle **MOLECOLE FISSANTI DEI PIGMENTI** che permettono di sigillare l'interazione magnetica delle cariche (positive e negative) aumentandone l'efficacia. Inoltre, l'alta concentrazione di pigmento viola in combinazione con il tempo di posa permette a **Instant Cool Blonde Fluid** di agire anche su basi ramate.

Per questo, l'effetto neutralizzante è visibile anche su capelli con base 8, 9 oltre che 10!

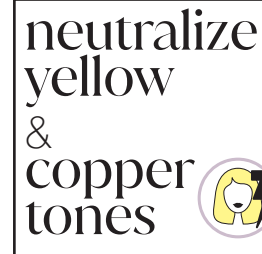
APPLICAZIONE FACILE E MIRATA: grazie alla sua base gel e al beccuccio applicatore.

Fluido neutralizzante istantaneo per toni gialli e ramati. Ideale per capelli biondi, decolorati o grigi. **Modo d'uso:** lavare i capelli con *Blonde Shampoo*. Applicare su capelli bagnati e massaggiare, lasciare in posa per 10 sec. e risciacquare. Ripetere se necessario.

EN. Cool blonde in just 10 seconds

The innovative **HYDROGEL BASE** allows the violet pigment to immediately come into contact with the hair without interacting with the fatty phase of the emulsion. Therefore it works faster and more effectively than standard emulsions.

VISIBILE EVEN ON HAIR WITH BASE 8, 9 AS WELL AS 10. The formula contains **PIGMENT-FIXING MOLECULES** which, after the magnetic interaction of the charges (positive and negative), seal the bond, increasing its effectiveness. Moreover, the high concentration of violet pigments in combination with the processing time allows **Instant Cool Blonde Fluid** to act also on copper base.



This is why the neutralizing effect is visible even on hair with base 8, 9 as well as 10!

TARGETED & EASY APPLICATION: thanks to its gel base formula and nozzle applicator.

Instant neutralizing fluid for yellow and copper tones. Ideal for blonde, bleached or grey hair. **Directions:** wash hair with the *Blonde Shampoo*. Apply to wet hair and massage. Leave on for 10 seconds and rinse. Repeat if necessary.

ES. Cool blonde solo en 10 segundos

La innovativa **BASE DE HIDROGEL** permite a los pigmentos violeta de entrar en contacto inmediato con el cabello sin tener interacción con la fase grasa. Así que este producto funciona más rápidamente y eficazmente de las emulsiones estándares.

VISIBILE INCLUSO EN EL PELO CON BASE 8, 9 ASÍ COMO CON BASE 10. La formula incluye **MOLECULAS FIJADORAS DE PIGMENTOS** que, después de la interacción magnética de las cargas (positivas y negativas), sellan la unión aumentando así su eficacia. Además, la elevada concentración de pigmentos violeta junto al tiempo de procesamiento, permiten a **Instant Cool Blonde Fluid** de ser eficaz también con base cobre. Es por eso que el efecto neutralizante es visible incluso en el pelo con base 8, 9 así como con base 10.

La **APLICACIÓN ES DIRIGIDA Y PRECISA** gracias a la formula a base de gel y al aplicador de boquilla.

Fluido instantáneo neutralizante para tonos amarillos y cobrizos. Ideal para cabellos rubios, decolorados o grises. **Modo de uso:** lavar el cabello mojado y masajear, dejar actuar 10 segundos y aclarar. Repetir si es necesario.





Detox

for all hair types
per tutti i tipi di capelli
para todo tipo de cabello

detox
action...



Detox Shampoo

for all hair types
with Mediterranean Herbs
Citrus and Jasmine Aroma

IT. Shampoo rivitalizzante ad azione detox per tutti i tipi di capello, con erbe mediterranee. **Modo d'uso:** applicare sui capelli umidi, emulsionare e risciacquare.

EN. Revitalizing shampoo for all hair types, with mediterranean herbs. **Directions:** apply to wet hair, massage gently and rinse.

ES. Champú revitalizante detox para todo tipo de cabello, con hierbas mediterraneas. **Instrucciones:** aplique sobre el cabello mojado, masajee suavemente y enjuague.



green
infusion



deep
cleanser



BALANCED
pH

250 ml_8.45 fl. oz.

...what's in the bottle?

**Achillea
millefolium extract**
Estratto di Achillea
Extracto de Milenrama

**Betula alba
leaf extract**
Estratto di Betulla
Extracto de Abedul

**Capsicum frutescens
fruit extract**
Estratto di Capsico
Estrato de Pimiento

**Cinchona succirubra
bark extract**
Estratto di Chichona
Extracto de Chichona

**Eucalyptus globulus
leaf extract**
Estratto di Eucalipto
Extracto de Eucalipto

**Hypericum
perforatum extract**
Estratto di iperico
Extracto de Hipérico

**Quillaia saponaria
bark extract**
Estratto di Quillaia
Estrato de Quillaia

**Rosmarinus officinalis
(Rosemary) leaf extract**
Estratto di Rosmarino
Extracto de Romero

**Salvia officinalis
(Sage) leaf extract**
Estratto di Salvia
Extracto de Salvia



Energizing

for fragile hair
at risk of falling out
per capelli fragili a rischio caduta
para cabellos frágil
con riesgo de caída



...stimulates regrowth



Energizing Shampoo

for scalp and thinning hair
with Ginseng Root and Keratin
Blackcurrant and Citrus Aroma

IT. Shampoo energizzante densificante per capelli fragili a rischio caduta. Azione stimolante sul cuoio capelluto. Con Planoxil RG e Keratina. **Modo d'uso:** applicare sui capelli umidi, emulsionare e risciacquare.

EN. Energizing and densifying shampoo for fragile hair at risk of falling out. Scalp-stimulating effect, densifying action. With Planoxil RG and Keratin. **Directions:** apply to wet hair, massage gently and rinse.

ES. Champú energizante densificante para cabellos frágil con riesgo de caída. Acción estimulante sobre el cuero cabelludo. Con Planoxil RG y Queratina. **Instrucciones:** aplique sobre el cabello mojado, masajee suavemente y enjuague.

250 ml / 8.45 fl. oz.



densifying
action



Energizing Lotion

for thinning hair prone to hair loss
with Ginseng Root and Keratin
Blackcurrant and Citrus Aroma

IT. Formulato con Ginseng e Cheratina svolge un'azione stimolante sul cuoio capelluto. **Modo d'uso:** lavare i capelli con Energizing Shampoo e versare alcune gocce del prodotto scostando i capelli in modo da avvicinarsi il più possibile al bulbo. Non risciacquare.

EN. Formulated with Ginseng and Keratin provides scalp-stimulating effect. **Directions:** wash hair with the Energizing Shampoo, apply a few drops of lotion on scalp. Do not rinse.

ES. Formulada con Ginseng y Queratina, desempeña una acción estimulante en el cuero cabelludo. **Instrucciones:** lavar el cabello con Champú Energizante y verter unas gotas del producto, apartando el cabello para acercarse lo más posible al bulbo. No enjuagar.

100 ml / 3.38 fl. oz.



scalp-stimulating
effect





3deluxe
PROFESSIONAL

PROFESSIONAL
STYLING

Finishing, smooth
and volume
for your hair...

in-salon professional

Ultimate Hairspray

with Argan Oil
Dries Instantly / Ultra Strong Hold / Shiny Finish
Mango and Berries Fragrance

HOLD 0 1 2 3 4 5

IT. Lacca sostegno estremo. Dona controllo e volume ai capelli. Non lascia residui. **Modo d'uso:** per modellare, vaporizzare a 20 cm dalla capigliatura e pettinare. Per rifinire, dirigere direttamente su parti interessate.

EN. Extreme hold hairspray, gives control and volume to hair. It leaves no residue. **Directions:** to shape, spray 8" (20 cm) from hair and comb. To finish, spray directly on the desired areas.

ES. Laca fijación extrema. Aporta control y volumen al cabello. No deja residuos. **Instrucciones:** para moldear, vaporizar a 20 cm del cabello y peinar. Para el acabado, dirigir directamente sobre las zonas elegidas.

FINISHING

maximum
control

500 ml_16.9 fl. oz.



EXTREME hold



fast drying



shine



humidity control



Ultimate Hairspray

HOLD 0 1 2 3 4 5

with Argan Oil
Dries Instantly / Ultra Strong Hold / Shiny Finish
Mango and Berries Fragrance

MADE IN ITALY
500 ml/m.l. e_16.9 fl. oz.





No Gas Fixing Spray

with Argan Oil
Fast Drying / Extra Strong Hold / Shiny Finish

Mango and Berries Fragrance

HOLD 0 1 2 3 4 5

IT. Lacca ecologica no gas, volume e sostegno a lunga durata. Effetto luce. Non lascia residui. **Modo d'uso:** per modellare, vaporizzare a 20 cm dalla capigliatura e pettinare. Per rifinire, dirigere direttamente su parti interessate.

EN. No gas hairspray, long-lasting hold and volume. Silky shine effect. It leaves no residue. **Directions:** to shape, spray 8" (20 cm) from hair and comb. To finish, spray directly on the desired areas.

ES. Laca ecológica sin gas. Aporta volumen y fijación de larga duración. Realza el brillo, no deja residuos. **Instrucciones:** para moldear, vaporizar a 20 cm del cabello y peinar. Para el acabado, dirigir directamente sobre las zonas elegidas.

FINISHING

no gas
extra strong

300 ml_10.14 fl. oz.



EXTRA hold



shine



humidity control

Thermal Protector

with Linseed Oil
Extra Silky Glossy Finish / Light Hold / Humidity Control

Rose and Jasmine Fragrance

HOLD 0 1 2 3 4 5

IT. Spray per capelli lisci e protetti, combatte l'effetto crespo. Protegge dai danni causati da piastra e phon. **Modo d'uso:** vaporizzare sui capelli ribelli, tamponati o asciutti.

EN. Smooth and protect spray. It protects hair from thermal damage caused by heating styling tools. **Directions:** spray over unruly, damp or dry hair.

ES. Spray cabello liso y protegido. Combate el frizz y protege de los daños causados por la plancha y la secadora. **Instrucciones:** aporizar sobre el cabello rebelde, secado con toalla o seco.

SMOOTH

heat
protection

300 ml_10.14 fl. oz.



EXTREME hold



fast drying



EXTRA shine



humidity control





Volumizing Mousse

with Argan Oil
Body and Fullness / Strong Hold / Shiny Finish
Mango and Berries Fragrance

HOLD 0 1 2 3 4 5

IT. Volume & shine mousse dona extra volume e lucentezza ai tuoi capelli. Modo d'uso: applicare una piccola quantità sui capelli tamponati e procedere allo styling desiderato.

EN. Volume & shine mousse gives your hair extra volume and shine. Control and hold for all styles. **Directions:** apply a small amount to damp hair and blow-dry.

ES. Volume & shine mousse aporta al cabello extra volumen y brillo. Control y soporte para todos los peinados. **Instrucciones:** aplicar una pequeña cantidad sobre el cabello húmedo y proceder al secado o peinado deseado.

VOLUME
luxury
volume

300 ml / 10.14 fl. oz.



EXTRA
volume



shine



frizz
control



Finishing

define your
hair

Smooth

for dry/dull
hair

Volume

give volume
to your hair

3deluxe

PROFESSIONAL

MADE IN ITALY

F.M.A. s.r.l. 22070 (COMO) ITALY
info@3deluxe.it - www.3deluxe.it



8

022033111227