

**3deluxe**  
PROFESSIONAL

**PRODUCT  
CATALOGUE**  
*professional hair cosmetic products*

Made in Italy



Prodotti e rituali professionali di raffinata manifattura italiana per la bellezza e il benessere dei tuoi capelli.

---

Professional products of refined Italian manufacture and rituals for the beauty and well-being of your hair.

---

Productos profesionales de refinada fabricación italiana y rituales para la belleza y el bienestar de tu cabello.

**3deluxe**  
PROFESSIONAL





PROFESSIONAL  
PERMANENT  
HAIR COLOURING  
CREAM

—  
More than a color..  
a new light.

**3deluxe**  
PROFESSIONAL

# 3deluxe

PROFESSIONAL

## COLOR CHART\_118 NUANCES

	NATURALS	INTENSE NATURALS	MATT COLD NATURALS	ASH	INTENSE ASH	GOLDENS	BROWNS-BEIGES						COPPERS			REDS			MAHOGANY	VIOLETS-IRISEE										
	.0	.00	.07	.1	.11	.3	.34	.31	.32	.35	.52	.8	.88	.81	.12	.13	.4	.43	.44	.62	.64	.66	.5	.02	.021	.21	.22	.26	.221	
10	10.0			10.1		10.34																	10.5	10.02	1.021			10.26		
9	9.0	9.00	9.07	9.1	9.1	9.3									9.12	9.13							9.5	9.02		9.21	9.22	.26		
8	8.0	8.00	8.08	8.1	8.11	8.3	8.34					8.8					8.4													8.221
7	7.0	7.00	7.07	7.1	7.11	7.3		7.31	7.32				7.8				7.13	7.4	7.43	7.44	7.62	7.64	7.66							
6	6.0	6.00	6.07	6.1	6.11	6.3		6.31	6.32	6.35	6.52	6.8	6.88	6.81			6.13	6.4			6.62		6.66	6.5						6.221
5	5.0	5.00	5.07	5.1		5.3		5.31		5.35	5.52	5.8	5.88		5.12		5.4				5.62	5.64								
4	4.0	4.00		4.1		4.3					4.35	4.52		4.88	4.2															4.5
3	3.0																													
1	1.0																													2.10

**STANDARD**  
mixing ratio

**1 : 1,5**

EX.: 50 ml 3deluxe Color  
+ 75 ml 3deluxe Cream Developer

**SPECIAL BLONDE**  
mixing ratio

**1 : 2**

EX.: 50 ml 3deluxe Color  
+ 100 ml 3deluxe Cream Developer

<b>METALS</b>	10.21	PINK	7.82	9.82	10.82	10.102	10.11	6.12	8.12	10.12
<b>SPECIAL BLONDE</b>	12.0	12.08/ 12.07	12.1	12.11	12.12/ 12.16	12.21	12.021/ 12.81	12.022/ 12.89	12.122/ 12.96	
<b>SPECIAL MIX</b>	10.00	BLUE	YELLOW	GREEN	RED	VIOLET				





## 3d lux Tech

### Rich/Luminous/Multi-faceted Colour

**ALTA QUALITÀ.** I micropigmenti penetrano in profondità nella fibra capillare, garantendo un'ottima copertura e una maggiore durata del colore.

**PROTEZIONE.** Oligopeptidi di ridottissime dimensioni molecolari penetrano in profondità nella fibra capillare, apportando notevoli benefici in termini di vitalità e forza. Inoltre, il Decil Oleate, uno speciale emoliente anti-irritazione, crea un film protettivo.

**IDRATAZIONE.** Crema morbida, facile da applicare, ricca di agenti condizionanti e lenitivi (*olio di Argan e della Calendula*).

---

**HIGH QUALITY.** High quality micropigments penetrate deeply into the hair fiber, ensuring an excellent grey coverage and long lasting brilliant colour.

**LUMINOUS.** Low molecular weight peptides penetrate deeply into the hair fiber improving strength and vitality, while a special anti-irritation molecule, Decil Oleate, creates a protective film.

**MOISTURE.** Soft cream, easy to apply, rich in moisturizing and soothing agents (*Argan Oil and Marigold*).

---

**ALTA CALIDAD.** Los micropigmentos penetran profundamente en la fibra capilar, esto garantiza una excelente cobertura y una mayor duración del color.

**PROTECCIÓN.** Los oligopéptidos de dimensiones molecular muy pequeñas penetran profundamente en la fibra capilar, aportando beneficios significativos en términos de vitalidad y fuerza. Además el Decil Oleate, un emoliente antiirritante especial, crea una película protectora.

**HIDRATACIÓN.** Crema suave, fácil de aplicar, rica en agentes acondicionadores y Calmantes (*Aceite de Argán y Caléndula*).

### 3d lux Tech

with Argan Oil and Marigold extract



fast lightening action  
low Ammonia  
microgranular dust FREE

with Marula Oil, Coconut Oil and Malic Acid

Rose Fragrance

up to  
9 levels  
of lift



### Bleaching powder

fast lightening action / Low Ammonia  
Microgranular Dust Free  
with Marula Oil, Coconut Oil and Malic Acid  
Rose Fragrance

MADE IN ITALY  
500 g/1 e Net Wt. 17.64 oz.

up to  
9 levels  
of lift

fast lightening action / Low Ammonia  
Microgranular Dust Free  
with Marula Oil, Coconut Oil and Malic Acid  
Rose Fragrance

MADE IN ITALY  
30 g/1 e Net Wt. 1 oz.

# professional colour, oxydant & bleaching

for colouring service  
*per la colorazione dei capelli  
para servicio de coloración*

... a new light

## Color Professional permanent hair colouring cream

Crema colorante permanente professionale per capelli.  
Crema colorante para el pelo.

with 3d lux Tech  
118 nuances

100 ml\_3.38 fl. oz.: P09DEL+SHADE NUMBER (ex.: P09DEL1.0)



## Cream Developer Stabilised oxidizing emulsion

Emulsione cremosa ossigenata stabilizzata.  
Emulsión oxidante en crema.

3% (10V.) 1000 ml\_33.8 fl. oz.: P07A0131000DELUXE  
6% (20V.) 1000 ml\_33.8 fl. oz.: CP07A0101000DELUXE  
9% (30V.) 1000 ml\_33.8 fl. oz.: P07A0111000DELUXE  
12% (40V.) 1000 ml\_33.8 fl. oz.: P07A0121000DELUXE  
Tone on Tone Activator 1.5% (5V.) 1000 ml\_33.8 fl. oz.: P07A0151000DELUXE  
-  
6% (20V.) 100 ml\_3.38 fl. oz.: P07A010100DELPE  
9% (30V.) 100 ml\_3.38 fl. oz.: P07A011100DELPE  
12% (40V.) 100 ml\_3.38 fl. oz.: P07A012100DELPE  
Tone on Tone Activator 1.5% (5V.) 100 ml\_3.38 fl. oz.: P07A015100DELPE



## Bleaching powder Powerful, fast acting, conditioning

**Bleaching Powder.** Powerful, fast acting, conditioning. Provides up to 9 levels of lift while conditioning the hair fiber thanks to the presence of rice starch.

**Polvere Decolorante.** Massimo potere schiarente, azione rapida, condizionante. Schiarisce fino ad 9 toni rispettando il capello grazie all'amido di riso.

**Polvo Decolorante.** Máximo poder aclarante, de acción rápida, acondicionador. Aclara hasta 9 tonos respetando el cabello gracias al almidón de arroz.

fast lightening action / low Ammonia  
microgranular dust FREE

with Marula Oil, Coconut Oil and Malic Acid

500 g\_Net Wt. 17.64 oz.: FARDECDELUXE500GR  
30 g\_Net Wt. 1 oz.: FARDECBUSDELUXE30GR

up to  
9 levels  
of lift







PROFESSIONAL  
HAIRCARE  
COLLECTION  
for the HEALTH  
and WELL-BEING  
of YOUR HAIR

**3deluxe**  
PROFESSIONAL

PROFESSIONAL CARE  
/in-salon professional & home care/

Color

for colored hair



Color Shampoo



Color Mask

color family  
**Terra di Siena**

Nutritive

for dry and dull hair



Nutritive Shampoo



Nutritive Conditioner

color family  
**Giallo di Napoli**

Filler

for dry and damaged hair



Filler Shampoo



Filler Conditioner



Instant Filler Glow Water

color family  
**Marmo Rosa**

No.Yellow

for blonde, bleached or gray hair



No.Yellow Shampoo

color family  
**Mirto di Sardegna**

Blonde

for blonde, bleached, highlighted or gray hair



Blonde Shampoo

color family  
**Viola Glicine**



Blonde Conditioner



Instant Cool Blonde Fluid

Detox

for all hair types



Detox Shampoo

color family  
**Argilla Veronese**

Energizing

for fragile hair at risk of falling out



Energizing Shampoo

color family  
**Travertino Romano**



Energizing Lotion





color protection  
low optimized pH  
-  
Orange and Citrus  
Fragrance

Sunflower Seed  
Extract

-  
Blackcurrant and Peach  
Fragrance

Color  
for colored hair  
per capelli colorati  
para cabello teñido

... revive  
the color

#### Key Ingredients:

**Fig Extract** Rich in Omega fatty acids and Vitamins A and B, gives shine and nourishment / Ricco di acidi grassi Omega e Vitamine, apporta lucentezza e nutrizione / Rico en ácidos grasos Omega y Vitaminas A y B, aporta brillo y nutrición.

**Almond Milk** A unique complex of Almond Oil and Hydrolyzed Protein to maximize color protection / Un esclusivo complesso di Olio di Mandorla e Proteine Idrolizzate per prolungare / Único complejo de Aceite de Almendras y Proteínas Hidrolizadas que maximiza la protección del color.

**Sunflower Seed** Rich in Vitamin E, gives nourishment and shine while protecting color vibrancy / Ricco di Vitamina E, apporta nutrizione e brillantezza aiutando a prolungare la durata del colore / Superalimento rico en Vitamina E, nutre y aporta brillo, protegiendo la vivacidad del color.

## Color Shampoo

250 ml\_8.45 fl. oz.: P06B015250DELUXE / 1000 ml\_33.8 fl. oz.: P06B0151000DELUXE

**Shampoo protezione colore** e luminosità per capelli colorati, con latte di mandorla dolce e fico. **Modo d'uso:** applicare sui capelli umidi, emulsionare e risciacquare.

**Color protection shampoo** for colored hair, with sweet almond milk and fig. **Directions:** apply to wet hair, massage gently and rinse.

**Champú protector del color** y brillo para cabello teñido, con leche de almendras dulces e higo. **Instrucciones:** aplique sobre el cabello mojado, masajee suavemente y enjuague.



shine



ACIDIC  
pH



color  
protection



vegan



not tested  
on animals

## Color Mask

250 ml\_8.45 fl. oz.: P01A034250DELUXE / 1000 ml\_33.8 fl. oz.: P01A0341000DELUXE

**Maschera protezione colore** per capelli colorati, con estratto di semi di girasole. **Modo d'uso:** applicare dopo lo shampoo sui capelli umidi e pettinare. Lasciare agire 2-3 minuti. Risciacquare.

**Color protection mask** for colored hair, with sunflower seed extract. **Directions:** after shampooing, apply to wet hair and comb through. Leave on 2-3 minutes. Rinse.

**Máscara protectora del color** para cabello teñido, con extracto de semillas de girasol. **Instrucciones:** luego de lavar con el champú, aplique sobre el cabello mojado y pénelo. Déjelo actuar durante 2 o 3 minutos. Enjuague.



shine



ACIDIC  
pH



color  
protection



vegan



not tested  
on animals



**Nutritive**  
for dry and dull hair  
per capelli secchi e spenti  
para cabello seco y sin brillo

nourish  
your hair...

#### Key Ingredients:

**Argan Oil** *Legendary oil used for centuries, gives incomparable nourishment and shine / Olio leggendario, usato da secoli, dona incomparabile nutrizione e lucentezza / Aceite legendaro utilizado durante siglos, aporta incomparable nutrición y brillo.*

**Honey** *Great hair moisturizer composed of Glucose, Proteins, Vitamins and Minerals / Ottimo idratante per capelli composto da Glucosio, Proteine, Vitamine e Minerali / Gran humectante capilar compuesto de Glucosa, Proteinas, Vitaminas y Minerales.*

**Avocado Oil** *Rich in Fatty acids with deep nourishing properties / Ricco di Acidi grassi extra nutriente / Rico de ácidos grasos super nutritivo.*

**Wheat Protein** *Complex of Amino Acids that bring strength, volume and shine to the hair / Complesso di Aminoacidi che apportano forza, volume e brillantezza ai capelli / Complejo de Amino ácidos que brinda fuerza, volumen y brillo al cabello.*



## Nutritive Shampoo

250 ml\_8.45 fl. oz.: P06B014250DELUXE / 1000 ml\_33.8 fl. oz.: P06B0141000DELUXE

**Shampoo nutriente per capelli secchi**, con olio d'argan e miele. **Modo d'uso:** applicare sui capelli umidi, emulsionare e risciacquare.

**Nourishing shampoo for dry hair**, with argan oil and honey. **Directions:** apply to wet hair, massage gently and rinse.

**Champú nutritivo para cabello seco**, con aceite de argán y miel. **Instrucciones:** aplique sobre el cabello mojado, masajee suavemente y enjuague.



## Nutritive Conditioner

250 ml\_8.45 fl. oz.: P01A033250DELUXE / 1000 ml\_33.8 fl. oz.: P01A0331000DELUXE

**Balsamo nutriente intenso per capelli secchi**, con olio di avocado e proteine del grano. **Modo d'uso:** applicare dopo lo shampoo sui capelli umidi e pettinare. Lasciare agire 2-3 minuti. Risciacquare.

**Extreme conditioner for dry hair**, with avocado oil and wheat protein. **Directions:** after shampooing, apply to wet hair and comb through. Leave on 2-3 minutes. Rinse.

**Acondicionador extra nutriente para cabello seco**, con aceite de aguacate y proteína de trigo. **Instrucciones:** luego de lavar con el champú, aplique sobre el cabello mojado y pénelo. Déjelo actuar durante 2 o 3 minutos. Enjuague.







# Filler

for dry and damaged hair  
per capelli secchi e danneggiati  
para cabello seco y dañado

smooth  
your hair...

### Key Ingredients:

**Hyaluronic Acid** *Its main task is to retain considerable amounts of water within the tissues, protecting them and ensuring their firmness and elasticity / L'Acido ialuronico ha il compito principale di trattenere notevoli quantità di acqua all'interno dei tessuti, proteggendoli e garantendo loro compattezza ed elasticità / El ácido hialurónico tiene como principal misión retener cantidades considerables de agua en el interior de los tejidos, protegiéndolos y garantizando compacidad y elasticidad.*

**Vegetal Keratin** *Vegetal Keratin is a protein composed of 18 AMINO ACIDS; these amino acids repair damaged hair by plumping it and making its surface smoother, more even and shinier / La Cheratina vegetale è una proteina costituita da AMMINOACIDI; questi amminoacidi intervengono sui siti danneggiati del capello, rimpolpandolo e rendendo la sua superficie più liscia, omogenea e luminosa / La Queratina vegetal es una proteina compuesta por AMMINOACIDOS; estos aminoácidos intervienen en las zonas dañadas del cabello, lo que repulpándolo obtienen una superficie más lisa, homogénea y luminosa.*

## Filler Shampoo

250 ml\_8.45 fl. oz.: P06A040250DELUXE / 1000 ml\_33.8 fl. oz.: P06A0401000DELUXE

**Shampoo rimpolpante e illuminante.** Formula a pH acido. Deterge delicatamente e aiuta a rivitalizzare e rafforzare la fibra capillare, controllando l'effetto crespo. **Modo d'uso:** applicare sui capelli bagnati, emulsionare e risciacquare.

**Plumping and illuminating shampoo.** Acid pH formula. It gently cleanses and helps to revitalize and strengthen the fiber structure for frizz-free hair. **Directions:** apply to wet hair, massage gently and rinse.

**Champú rellenador, alisador y reestructurante.** Formula de pH ácido. Limpia delicadamente revitalizando y fortaleciendo la fibra capilar, controlando el efecto de frizz. **Instrucciones:** aplique sobre el cabello mojado, masajee suavemente y enjuague.



Sodium Chloride  
FREE



s/s/s/s  
FREE



strength



shine



frizz  
control



vegan



not tested  
on animals



## Filler Conditioner

250 ml\_8.45 fl. oz.: P01A039250DELUXE / 1000 ml\_33.8 fl. oz.: P01A0391000DELUXE

**Balsamo rimpolpante e illuminante.** Nutre intensamente i capelli rivitalizzando e rafforzando la fibra capillare, controllando l'effetto crespo. **Modo d'uso:** applicare sui capelli tamponati. Lasciare in posa 10 minuti, quindi risciacquare bene.

**Plumping and illuminating conditioner.** It intensely nourishes the hair by revitalizing and strengthening the fiber structure, for frizz-free hair. **Directions:** apply to towel-dried hair. Leave on for 10 minutes, then rinse well.

**Bálsamo rellenador y reconstituyente.** Nutre intensamente los cabellos revitalizando y fortaleciendo la fibra capilar, controlando el efecto frizz. **Instrucciones:** aplicar después del champú, secar los cabellos con una toalla y peinar. Dejar actuar 10 minutos. Enjuagar.



strength



shine



frizz  
control



vegan



not tested  
on animals



## Filler Instant Glow Water

250 ml\_8.45 fl. oz.: P05A024250DELUXE

**Dona in pochi secondi una chioma fluida,** super lucente e straordinariamente leggera. **Modo d'uso:** applicare sui capelli umidi, massaggiare, quindi risciacquare.

**In a few seconds hair is fluid, super shiny** and extremely lightweight. **Directions:** apply to towel-dried hair, massage, then rinse.

**Brinda en pocos segundos un cabello fluido,** super brillante y sorprendentemente ligero. **Instrucciones:** aplicar en cabello húmedo, masajear y enjuagar.



strength



shine



frizz  
control



vegan



not tested  
on animals



gentle pH 5.5

Aromatherapy effect:  
relaxing and soothing



nourish

Kumquat and Neroli  
Fragrance



instant neutralizing  
effect



## Blonde & No. Yellow

for blonde, bleached,  
highlighted or grey hair  
per capelli biondi, decolorati,  
mèches o grigi  
para cabello rubio, decolorado  
con mechas o gris

### Key Ingredients:

**Oats and Lavender** Natural ingredients rich in proteins and fats – with soothing and moisturizing properties / Avena e Lavanda, ingredienti naturali e ricchi di proteine e grassi – dalle proprietà lenitive ed idratanti / Avena y Lavanda, ingredientes organico ricos en proteínas y grasas saludables con propiedades hidratantes y calmantes.

**Vegetal Keratin and Macadamia Oil** Help to reinforce capillary bonds, while nourishing the hair leaving it feeling, feeling, shiny and healthy-looking / La Cheratina Vegetale e l'Olio di Macadamia aiutano a rafforzare i legami tra le fibre capillari, nutrendo e donando morbidezza, lucentezza e un aspetto sano ai capelli / La queratina vegetal y el aceite de macadamia ayudan a fortalecer los lazos entre las fibras capilares, nutriendo y dando suavidad, brillo y un aspecto saludable al cabello.

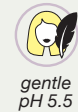
## Blonde Shampoo

250 ml\_8.45 fl. oz.: P06B013250DELUXE / 1000 ml\_33.8 fl. oz.: P06B0131000DELUXE

**Shampoo delicato uso frequente, pH 5.5** per tutti i tipi di capello con avena e lavanda. **Modo d'uso:** applicare sui capelli umidi, emulsionare e risciacquare.

**Daily use gentle shampoo, pH 5.5** for all hair types, with oats and lavender. **Directions:** apply to wet hair, massage gently and rinse.

**Champú delicado uso frecuente, pH 5.5** para todo tipo de cabello, con avena y lavanda. **Instrucciones:** aplique sobre el cabello mojado, masajee suavemente y enjuague.



gentle  
pH 5.5



vegan



NOT TESTED ON  
ANIMALS  
not tested  
on animals

## Blonde Conditioner

250 ml\_8.45 fl. oz.: P01A038250DELUXE / 1000 ml\_33.8 fl. oz.: P01A0381000DELUXE

**Ideale per capelli biondi, decolorati, con mèches o grigi.** Nutre, dona morbidezza, lucentezza e un aspetto sano ai capelli. **Modo d'uso:** applicare dopo lo shampoo, tamponare i capelli e pettinare. Lasciare agire 10 minuti. Risciacquare.

**Ideal for blonde, bleached, highlighted or grey hair.** It nourished and gives smoothness and shine for healthy-looking hair. **Directions:** after shampooing, apply to towel-dried hair and comb through. Leave on 10 minutes, then rinse.

**Ideal para todo tipo de cabello, especialmente cabello teñido y dañado.** Nutre, da suavidad, brillo y un aspecto saludable al cabello. **Instrucciones:** aplicar después del champú sobre el cabello seco con toalla y peinar. Dejar actuar durante 10 minutos. Enjuagar.



nourish



vegan



NOT TESTED ON  
ANIMALS  
not tested  
on animals

## No. Yellow Shampoo

250 ml\_8.45 fl. oz.: CP06A032250DELUXE / 1000 ml\_33.8 fl. oz.: P06A0321000DELUXE

No. Yellow shampoo. **Deterge delicatamente e aiuta a neutralizzare le tonalità giallastre.** Ideale per capelli biondi, decolorati, con mèches o grigi. **Modo d'uso:** applicare sui capelli umidi, emulsionare e risciacquare.

No. Yellow shampoo. **Gently cleanses and helps neutralize yellow undertones.** Ideal for blonde, bleached, highlighted or grey hair. **Directions:** apply to wet hair, massage gently and rinse.

Champú No. Yellow. **Limpia suavemente y ayuda a neutralizar los tonos amarillos.** Ideal para cabello rubio, decolorado, con mechas o canoso. **Instrucciones:** aplique sobre el cabello mojado, masajee suavemente y enjuague.



neutralize yellow  
undertones



vegan



NOT TESTED ON  
ANIMALS  
not tested  
on animals





## Instant Cool Blonde Fluid

250 ml\_8.45 fl. oz.: P01F007250DELUXE

**Fluido neutralizante instantaneo per toni gialli e ramati.** Ideale per capelli biondi, decolorati o grigi. **Modo d'uso:** lavare i capelli con Blonde Shampoo. Applicare su capelli bagnati e massaggiare, lasciare in posa per 10 sec. e risciacquare. Ripetere se necessario.

### Cool blonde in soli 10 secondi

L'innovativa **BASE HYDROGEL**, permette al pigmento viola di entrare direttamente a contatto col capello senza dover attraversare la fase oleosa (grassa) caratteristica delle emulsioni. Pertanto agisce piu in fretta e piu efficacemente.

**VISIBILE ANCHE SU CAPELLI CON BASE 8, 9 E 10.** La formula contiene delle MOLECOLE FISSANTI DEI PIGMENTI che permettono di sigillare l'interazione magnetica delle cariche (positive e negative) aumentandone l'efficacia. Inoltre, l'alta concentrazione di pigmento viola in combinazione con il tempo di posa permette a **Instant Cool Blonde Fluid** di agire anche su basi ramate. Per questo, l'effetto neutralizzante e **VISIBILE ANCHE SU CAPELLI CON BASE 8, 9 OLTRE CHE 10!**

**APPLICAZIONE FACILE E MIRATA:** grazie alla sua base gel e al beccuccio applicatore.



neutralize yellow  
and copper tones



vegan



not tested  
on animals

**Instant neutralizing fluid for yellow and copper tones.** Ideal for blonde, bleached or grey hair. Directions: wash hair with the Blonde Shampoo. Apply to wet hair and massage. Leave on for 10 seconds and rinse. Repeat if necessary.

### Cool blonde in just 10 seconds

The innovative **HYDROGEL BASE** allows the violet pigment to immediately come into contact with the hair without interacting with the fatty phase of the emulsion. Therefore it works faster and more effectively than standard emulsions.

**VISIBLE EVEN ON HAIR WITH BASE 8, 9 AS WELL AS 10.** The formula contains PIGMENT-FIXING MOLECULES which, after the magnetic interaction of the charges (positive and negative), seal the bond, increasing its effectiveness. Moreover, the high concentration of violet pigments in combination with the processing time allows **Instant Cool Blonde Fluid** to act also on copper base. This is why the neutralizing effect is **VISIBLE EVEN ON HAIR WITH BASE 8, 9 AS WELL AS 10!**

**TARGETED & EASY APPLICATION:** thanks to its gel base formula and nozzle applicator.

**Fluido instantáneo neutralizante para tonos amarillos y cobrizos.** Ideal para cabellos rubios, decolorados o grises. **Modo de uso:** lavar el cabello con Blonde Shampoo. Aplicar sobre el cabello mojado y masajear, dejar actuar 10 segundos y aclarar. Repetir si es necesario.

### Cool blonde solo en 10 segundos

La inovativa **BASE DE HIDROGEL** permite a los pigmentos violeta de entrar en contacto inmediato con el capello sin tener interacción con la fase grasa. Así que este producto funciona más rapidamente y eficazmente de las emulsiones estándares.

**VISIBLE INCLUSO EN EL PELO CON BASE 8, 9 ASÍ COMO CON BASE 10.** La formula incluye MOLECULAS FIJADORAS DE PIGMENTOS que, despues de la interacción magnética de las cargas (positivas y negativas), sellan la unión aumentando así su eficacia. Además, la elevada concentración de pigmentos violeta junto al tiempo de procesamiento, permiten a **Instant Cool Blonde Fluid** de ser eficaz también con base cobre. Es por eso que el efecto neutralizante es **VISIBLE INCLUSO EN EL PELO CON BASE 8, 9 ASI COMO CON BASE 10.**

La **APLICACIÓN ES DIRIGIDA Y PRECISA** gracias a la formula a base de gel y al aplicador de boquilla.





detox action  
with Mediterranean  
Herbs  
-  
Citrus and Jasmine



**3deluxe**  
PROFESSIONAL

Detox Shampoo

for all hair type  
with Mediterranean Herbs  
Citrus and Jasmine Aroma

MADE IN ITALY  
250 ml/ml e 8.45 fl. oz.

**Detox**  
for all hair types  
*per tutti i tipi di capelli*  
*para todo tipo de cabello*

**Key Ingredients:**

**Mediterranean Herbs**  
*Infused with a 9-herb detox mix rich in Vitamins, Polyphenols, Antioxidants that noticeably strengthen and revitalize the hair and scalp.*

*Infuso con un mix detossificante di 9 erbe preziose ricche di Vitamine, Polifenoli e Antiossidanti che rinvigoriscono e rivitalizzano capelli e cute.*

*Contiene 9 extractos herbales ricos en Vitaminas Polifenoles y Antioxidantes con propiedades fortalecedoras y revitalizantes.*

detox  
action...

**Detox Shampoo**

250 ml\_8.45 fl. oz.: P06B012250DELUXE / 1000 ml\_33.8 fl. oz.: P06B0121000DELUXE

**Shampoo rivitalizzante ad azione detox** per tutti i tipi di capello, con erbe mediterranee. **Modo d'uso:** applicare sui capelli umidi, emulsionare e risciacquare.

**Revitalizing shampoo for all hair types**, with mediterranean herbs.

**Directions:** apply to wet hair, massage gently and rinse.

**Champú revitalizante detox** para todo tipo de cabello, con hierbas mediterraneas.

**Instrucciones:** aplique sobre el cabello mojado, masajee suavemente y enjuague.



green  
infusion



deep  
cleanser



BALANCED  
pH



vegan



not tested  
on animals

...what's in  
the bottle?



**Achillea millefolium extract**

*Estratto di Achillea  
Extracto de Milenrama*

**Betula alba leaf extract**

*Estratto di Betulla  
Extracto de Abedul*

**Capsicum frutescens fruit extract**

*Estratto di Capsico  
Estrato de Pimiento*

**Cinchona succirubra bark extract**

*Estratto di Chichona  
Extracto de Chichona*

**Eucalyptus globulus leaf extract**

*Estratto di Eucalipto  
Extracto de Eucalipto*

**Hypericum perforatum extract**

*Estratto di iperico  
Extracto de Hipérico*

**Quillaia saponaria bark extract**

*Estratto di Quillaja  
Estrato de Quillaja*


**Rosmarinus officinalis (Rosemary) leaf extract**

*Estratto di Rosmarino  
Extracto de Romero*


**Salvia officinalis (Sage) leaf extract**

*Estratto di Salvia  
Extracto de Salvia*




  
**densifying action**  
 with Ginseng Root  
 and Keratin




  
**scalp-stimulating effect**  
 -  
 Blackcurrant  
 and Citrus Fragrance

**Energizing**  
 for fragile hair  
 at risk of falling out  
 per capelli fragili a rischio caduta  
 para cabellos frágil con riesgo  
 de caída

... stimulates  
 regrowth

**Key Ingredients:**

**Ginseng Roots** Carries out scalp-stimulating effect. Adds body and volume. Hair is left feeling thicker / Svolge un'azione stimolante sul cuoio capelluto. I capelli riacquistano corpo, volume e densità / Desempeña una acción estimulante en el cuero cabelludo. El cabello recobra cuerpo, volumen y densidad

**Keratin** Is a powerful protein that repairs damaged hair by plumping it and making its surface smoother, more even and shinier / La Cheratina è una portentosa proteina che interviene sui siti danneggiati del capello, rimpolpandolo e rendendo la sua superficie più liscia, omogenea e luminosa / La Queratina interviene en las zonas dañadas del cabello, lo que repulpándolas obtienen una superficie más lisa, homogénea y luminosa.

**Energizing Shampoo**

250 ml\_8.45 fl. oz.: P06A034250DELUXE

**Shampoo energizzante densificante per capelli fragili a rischio caduta.** Azione stimolante sul cuoio capelluto. Con Planoxil RG e Keratina. **Modo d'uso:** applicare sui capelli umidi, emulsionare e risciacquare.

**Energizing and densifying shampoo for fragile hair at risk of falling out.** Scalp-stimulating effect, densifying action. With Planoxil RG and Keratin. **Directions:** apply to wet hair, massage gently and rinse.

**Champú energizante densificante para cabellos frágil con riesgo de caída.** Acción estimulante sobre el cuero cabelludo. Con Planoxil RG y Queratina. **Instrucciones:** aplique sobre el cabello mojado, masajee suavemente y enjuague.



densifying action



vegan



not tested on animals

**Energizing Lotion**

100 ml\_3.38 fl. oz.: P05A022100DELUXE

Formulato con Ginseng e Cheratina **svolge un'azione stimolante sul cuoio capelluto.** **Modo d'uso:** lavare i capelli con Energizing Shampoo e versare alcune gocce del prodotto scostando i capelli in modo da avvicinarsi il più possibile al bulbo. Non risciacquare.

Formulated with Ginseng and Keratin **provides scalp-stimulating effect.** **Directions:** wash hair with the Energizing Shampoo, apply a few drops of lotion on scalp. Do not rinse.

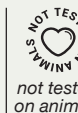
Formulada con Ginseng y Queratina, **desempeña una acción estimulante en el cuero cabelludo.** **Modo de empleo:** lavar el cabello con Champú Energizante y verter unas gotas del producto, apartando el cabello para acercarse lo más posible al bulbo. No enjuagar.



scalp-stimulating effect



vegan



not tested on animals



## HAIRCARE COLLECTION /in-salon professional/

### Color Shampoo & Color Mask

bottle 1000 ml\_33.8 fl. oz.  
jar 1000 ml\_33.8 fl. oz

### Detox Shampoo

bottle 1000 ml\_33.8 fl. oz.

### Nutritive Shampoo & Nutritive Conditioner

bottle 1000 ml\_33.8 fl. oz.

### Filler Shampoo & Filler Conditioner

bottle 1000 ml\_33.8 fl. oz.

### Blonde Shampoo & Blonde Conditioner

bottle 1000 ml\_33.8 fl. oz.

### Almond Shampoo

bottle 5000 ml\_169 fl. oz.



... daily use

### Almond Shampoo / SALON EXCLUSIVE

5000 ml\_169 fl. oz.: P06B02005DELUXE

**Shampoo alla mandorla per tutti i tipi di capelli. SALON EXCLUSIVE.**  
**Modo d'uso:** applicare sui capelli umidi, emulsionare e risciacquare.

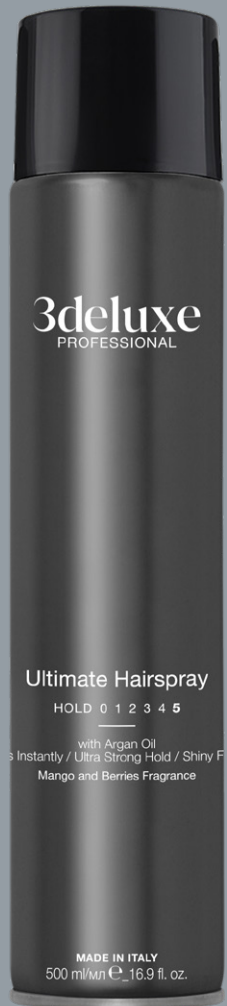
**Almond shampoo for all hair types. SALON EXCLUSIVE.**  
**Directions:** apply to wet hair, massage gently and rinse.

**Champú de almendras para todo tipos de cabello. SALON EXCLUSIVE.**  
**Modo de uso:** aplique sobre el cabello mojado, masajee suavemente y enjuague.





PROFESSIONAL STYLING  
/the collection/



FINISHING

Ultimate  
Hairspray

HOLD 0 1 2 3 4 5



Dries Instantly  
*Ultra Strong Hold*  
Shiny Finish

**maximum  
control**

FINISHING

No Gas  
Fixing Spray

HOLD 0 1 2 3 4 5



Fast Drying  
*Extra Strong Hold*  
Shiny Finish

**no gas  
extra strong**

SMOOTH

Thermal  
Protector

HOLD 0 1 2 3 4 5



Extra Silky Glossy Finish  
*Light Hold*  
Humidity Control

**heat  
protection**

VOLUME

Volumizing  
Mousse

HOLD 0 1 2 3 4 5



Body and Fullness  
*Strong Hold*  
Shiny Finish

**luxury  
volume**

# PROFESSIONAL STYLING

the collection



Ultimate Hairspray

Dries Instantly  
Ultra Strong Hold  
Shiny Finish

HOLD 0 1 2 3 4 5

Ultimate Hairspray

HOLD 0 1 2 3 4 5

with Argan Oil  
Dries Instantly / Ultra Strong Hold / Shiny Finish  
Mango and Berries Fragrance

MADE IN ITALY  
500 ml/mℓ e\_16.9 fl. oz.

500 ml/mℓ e\_16.9 fl. oz.  
MADE IN ITALY

3deluxe  
PROFESSIONAL

No Gas Fixing Spray

HOLD 0 1 2 3 4 5

with Argan Oil  
Fast Drying / Extra Strong Hold / Shiny Finish  
Mango and Berries Fragrance

MADE IN ITALY  
300 ml/mℓ e\_10.14 fl. oz.

300 ml/mℓ e\_10.14 fl. oz.  
MADE IN ITALY

No Gas Fixing Spray

Fast Drying  
Extra Strong Hold  
Shiny Finish

HOLD 0 1 2 3 4 5

Mango and Berries  
Fragrance



## Ultimate Hairspray

500 ml\_16.9 fl. oz.: FARLACDELUXEEXTREME

**Lacca sostegno estremo. Dona controllo e volume ai capelli.** Non lascia residui. **Modo d'uso:** per modellare, vaporizzare a 20 cm dalla capigliatura e pettinare. Per rifinire, dirigere direttamente su parti interessate.

**Extreme hold hairspray, gives control and volume to hair.** It leaves no residue. **Directions:** to shape, spray 8" (20 cm) from hair and comb. To finish, spray directly on the desired areas.

**Laca fijación extrema. Aporta control y volumen al cabello.** No deja residuos. **Indicaciones:** Para moldear, vaporizar a 20 cm del cabello y peinar. Para el acabado, dirigir directamente sobre las zonas elegidas.



EXTREME hold



fast drying



shine



humidity control



vegan



not tested on animals

Mango and Berries  
Fragrance



## No Gas Fixing Spray

300 ml\_10.14 fl. oz.: FARLACDELUXEECO

**Lacca ecologica no gas, volume e sostegno a lunga durata.** Effetto luce. Non lascia residui. **Modo d'uso:** per modellare, vaporizzare a 20 cm dalla capigliatura e pettinare. Per rifinire, dirigere direttamente su parti interessate.

**No gas hairspray, long-lasting hold and volume.** Silky shine effect. It leaves no residue. **Directions:** to shape, spray 8" (20 cm) from hair and comb. To finish, spray directly on the desired areas.

**Laca ecológica sin gas. Aporta volumen y fijación de larga duración.** Realza el brillo, no deja residuos. **Modo de uso:** para moldear, vaporizar a 20 cm del cabello y peinar. Para el acabado, dirigir directamente sobre las zonas elegidas.



EXTRA hold



shine



humidity control



vegan



not tested on animals



# PROFESSIONAL STYLING

the collection

Thermal Protector  
 Extra Silky Glossy Finish  
 Light Hold  
 Humidity Control

HOLD 0 1 2 3 4 5



Volumizing Mousse  
 Body and Fullness  
 Strong Hold  
 Shiny Finish

HOLD 0 1 2 3 4 5

Rose and Jasmine  
 Fragrance



## Thermal Protector

300 ml\_10.14 fl. oz.: FARLACDELUXETHERMAL

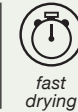
**Spray per capelli lisci e protetti, combatte l'effetto crespo.** Protegge dai danni causati da piastra e phon. **Modo d'uso:** vaporizzare sui capelli ribelli, tamponati o asciutti.

**Smooth and protect spray.** It protects hair from thermal damage caused by heating styling tools. **Directions:** spray over unruly, damp or dry hair.

**Spray cabello liso y protegido. Combate el frizz y protege de los daños causados por la plancha y la secadora.** **Modo de uso:** vaporizar sobre el cabello rebelde, secado con toalla o seco.



EXTREME hold



fast drying



EXTRA shine



humidity control



vegan



not tested on animals

Vanilla and Berries  
 Fragrance



## Volumizing Mousse

300 ml\_10.14 fl. oz.: FARMOUDELUXEVOLUME

**Volume & shine mousse dona extra volume e lucentezza ai tuoi capelli.** Controllo e tenuta per ogni styling. **Modo d'uso:** applicare una piccola quantità sui capelli tamponati e procedere allo styling desiderato.

**Volume & shine mousse gives your hair extra volume and shine.** Control and hold for all styles. **Directions:** apply a small amount to damp hair and blow-dry.

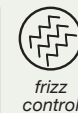
**Volume & shine mousse aporta al cabello extra volumen y brillo.** Control y soporte para todos los peinados. **Modo de uso:** aplicar una pequeña cantidad sobre el cabello húmedo y proceder al secado o peinado deseado.



EXTRA volume



shine



frizz control



vegan



not tested on animals



3deluxe CATALOGUE  
FARCATDEL



3deluxe COLOR CHART  
FARCARDELUXE118



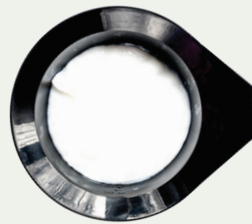
3deluxe  
1000 ml BOTTLE'S PUMP  
101000031



3deluxe BLEACHING POWDER'S SPOON  
FARMISPOLDEC



3deluxe DISPOSABLE COLOR CAPES  
(1X26 APPLICATION COLOR CAPES)



3deluxe MIXING COLOR BOWL  
SCODELLANEWDEL



3deluxe PAPER SHOPPER



3deluxe COLOR BRUSH  
PENNELNEWDEL

MARKETING  
TOOLS  
materials and tools  
available to  
customize your  
WEB SITE, SOCIAL  
NETWORK...

**3deluxe**  
PROFESSIONAL



# 3deluxe

PROFESSIONAL

---

3deluxe.it

MADE IN ITALY - صنع في إيطاليا  
Производитель.  
F.M.A. s.r.l. 22070  
(COMO) ITALY/Италия

